


USB CABLE DRIVER INSTALLATION GUIDE

V1.1

Copyright and Disclaimer:

- © All copyrights belong to Shenzhen fifotrack Solution Co., Ltd. You are not allowed to revise, copy or spread this file in any form without consent of fifotrack.
- ©  is trademark of fifotrack, protected by law.
- © Please read this user guide carefully before installation to avoid any possible personal injury or property loss.

Revision History

Version	Author	Revision Date	Description of change
V1.1	Vito Hu	Sep 17, 2015	Initial revision

Related Files


Version	File	Remarks
V1.1	<FIFOTRACK GPRS PROTOCOL>	GPRS protocol between terminal and server.
V1.1	<FIFOTRACK COMMAND LIST>	Command details of GPRS/SMS/COM
V1.1	<FIFOTRACK VEHICLE GPS TRACKER A100 USER GUIDE>	A100 vehicle tracker model user guide
V1.1	<FIFOTRACK PARAMETER TOOL USER GUIDE >	PC software tool for parameter configuration
V1.1	<FIRMWARE UPGRADE GUIDE>	How to upgrade firmware

1 Overview

USB cable driver is the necessary driver to run USB cable well. The USB cable is used to connect terminal with parameter tool, Mycom or firmware upgrade suite software on PC.

2 Installing USB Cable Driver

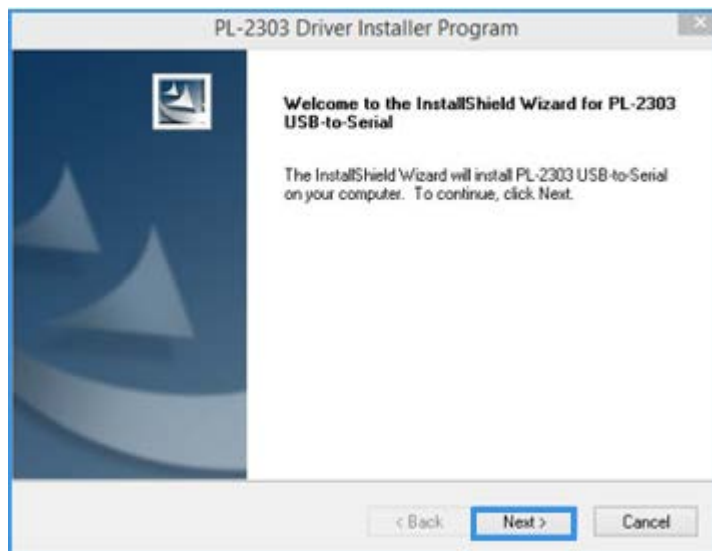
2.1 Visit www.fifotrack.com click "Support" menu to download USB cable driver.

 PL2303_Prolific_DriverInstaller_v1.11.0.exe

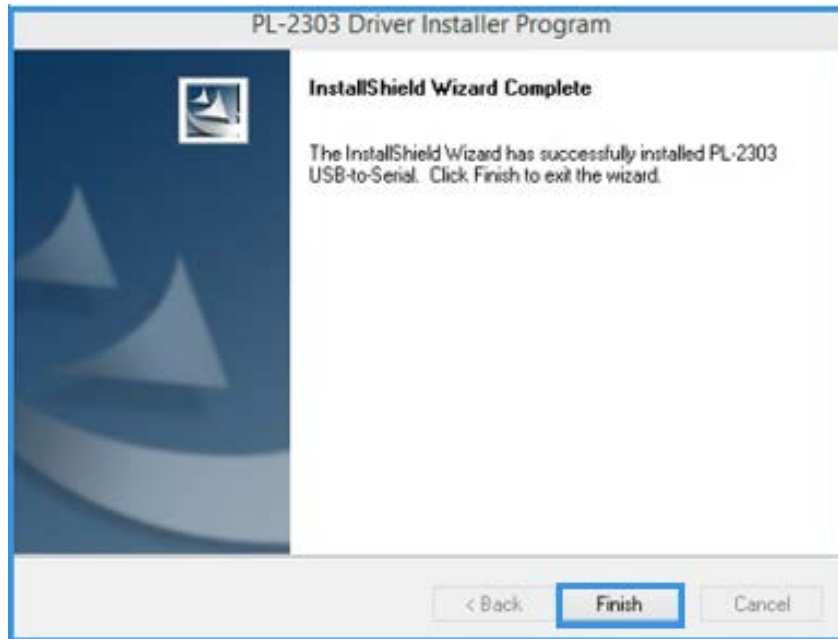
USB cable driver Support:

- Windows XP (32&64bit)
- Windows 7 (32&64bit)
- Windows 8 (32&64bit)

2.2 Installing USB driver, click "Next".



2.3 Click “Finish”, the driver is installed successfully.



Please e-mail us at info@fifotrack.com for any question or feedback