


FIFOTRACK PARAMETER TOOL USER GUIDE

V1.1

Copyright and Disclaimer:

- ⦿ All copyrights belong to Shenzhen fifotrack Solution Co., Ltd. You are not allowed to revise, copy or spread this file in any form without consent of fifotrack.
- ⦿  is trademark of fifotrack, protected by law.
- ⦿ Please read this user guide carefully before installation to avoid any possible personal injury or property loss.

Revision History

Version	Author	Revision Date	Description of change
V1.1	Vito Hu	Sep 10, 2015	Initial revision

Related Files

Version	File	Remarks
V1.1	<FIFOTRACK GPRS PROTOCOL>	GPRS protocol between terminal and server.
V1.1	<FIFOTRACK COMMAND LIST>	Command details of GPRS/SMS/COM
V1.1	<FIFOTRACK VEHICLE GPS TRACKER A100 USER GUIDE>	A100 vehicle tracker model user guide
V1.1	<USB CABLE DRIVER INSTALLATION GUIDE>	How to install USB cable driver
V1.1	<FIRMWARE UPGRADE GUIDE>	How to upgrade firmware

Contents

1 Parameter Tool Overview	4
2 Hardware and Software Requirements	4
3 Start to Use Parameter Tool.....	4
4 Functions	8
4.1 Main menus	8
4.2 GPRS menu functions	9
4.3 Main parameter functions.....	10
4.4 Alarm setting functions.....	11
4.4.1 Alarm action	11
4.4.2 SMS head.....	12
4.4.3 SOS number setting.....	12
4.5 Terminal Info	13

1 Parameter Tool Overview

FIFOTRACK PARAMETER TOOL is a PC software for parameter configuration through COM port. With its friendly interface, users can read, change and configure parameters efficiently on PC.

2 Hardware and Software Requirements

- Windows XP (32&64bit) /Windows 7 (32&64bit)/Windows 8 (32&64bit)
- 1 USB cable
- USB cable driver
- Parameter tool software

3 Start to Use Parameter Tool

Visit www.fifotrack.com to download and Install USB cable driver



PL2303_Prolific_DriverInstaller_v1.11.0.exe

Refer to <USB CABLE DRIVER INSTALLATION GUIDE> for more details.

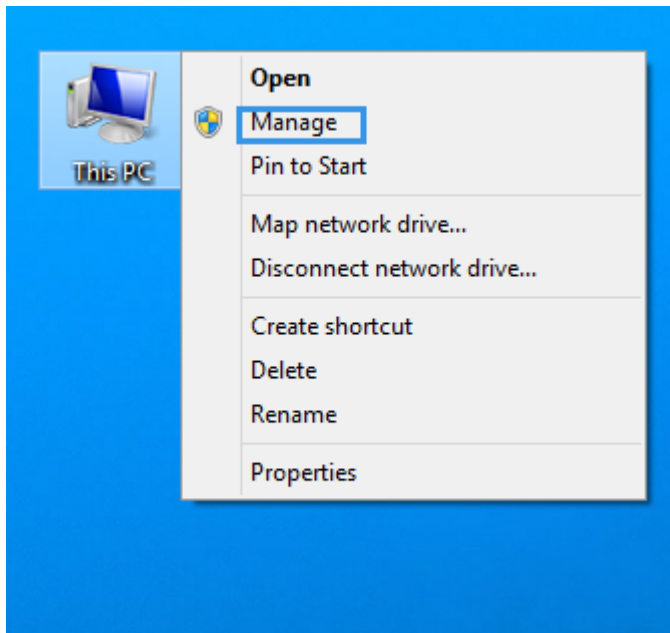
Visit www.fifotrack.com to download and run parameter tool software

Connect terminal with PC via USB cable, choose correct COM port and baud rate. A100 model uses **9600** baud rate.

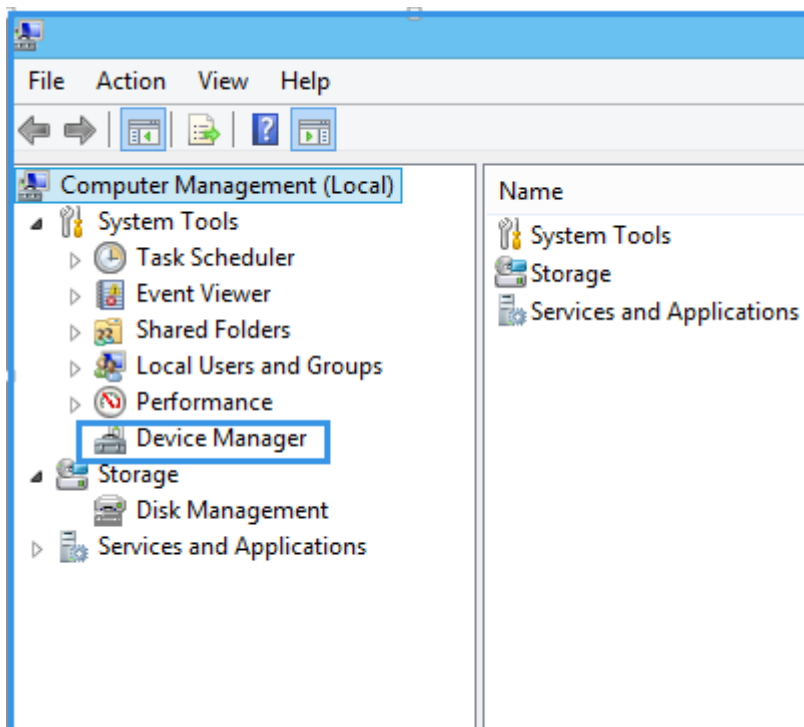


Follow below steps to identify correct port.

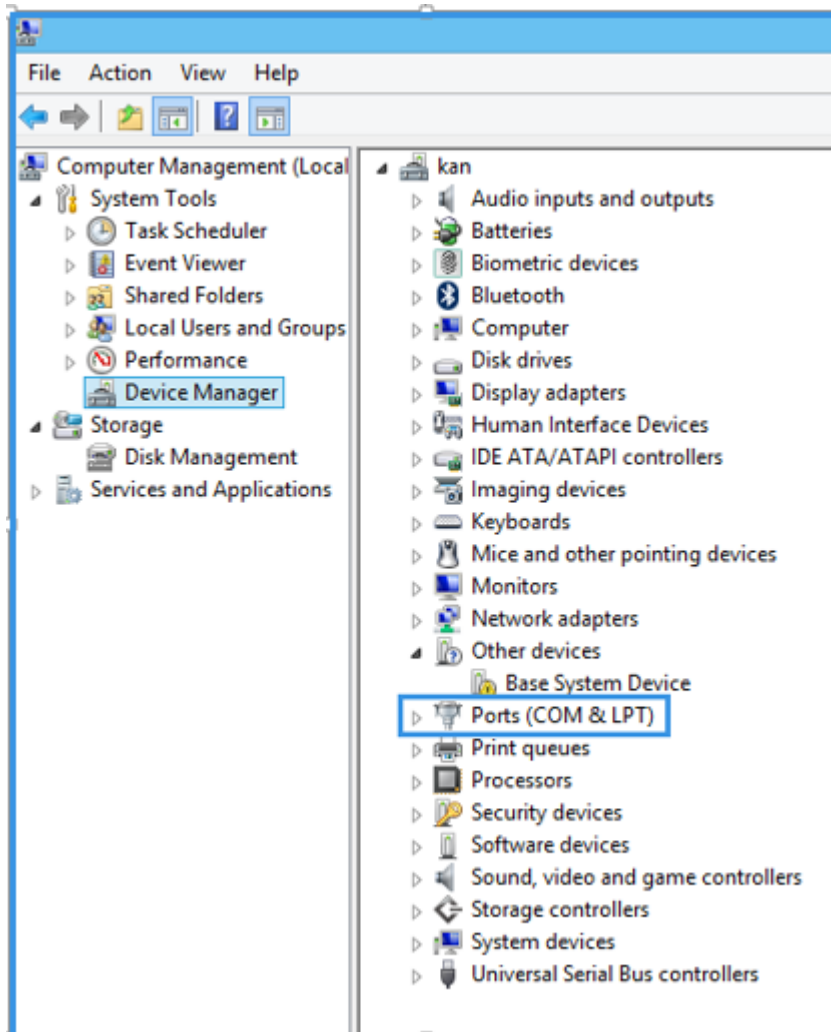
Right Click "This PC" menu, Click "Manage"



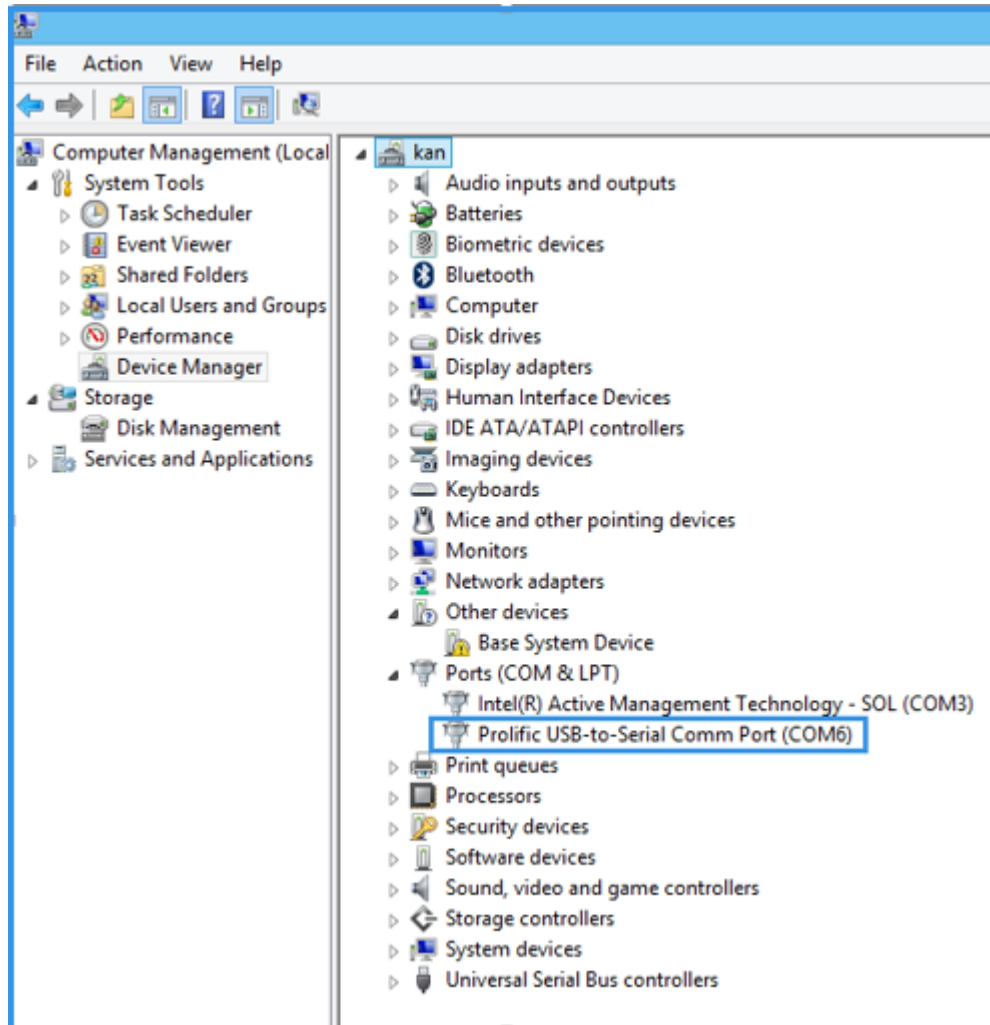
Double Click "Device Manager" menu



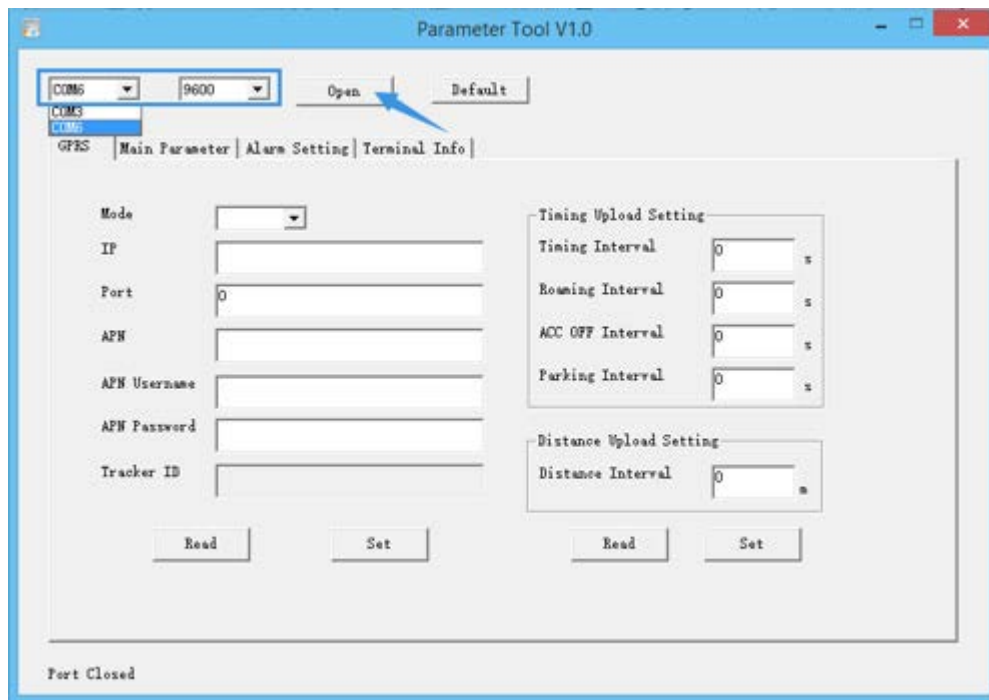
Click "Ports"



“COM6” is the correct port of parameter tool.

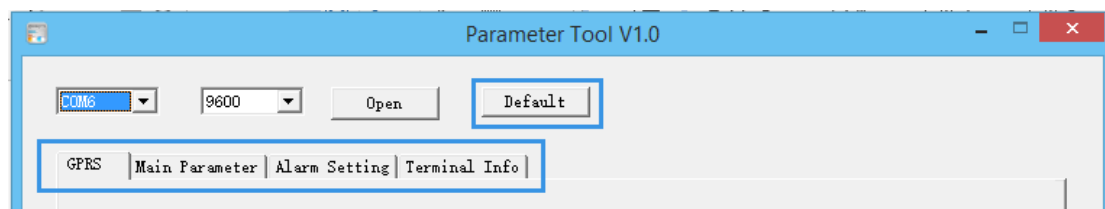


Run parameter tool, choose “COM6” port, “9600” baud rate, and click “Open” to open the port.



4 Functions

4.1 Main menus



Default: All parameters restore to factory settings.

GPRS: Set GPRS parameters and upload interval settings.

Main Parameter: Set main parameters like event's value, sleep mode and input mode, etc.

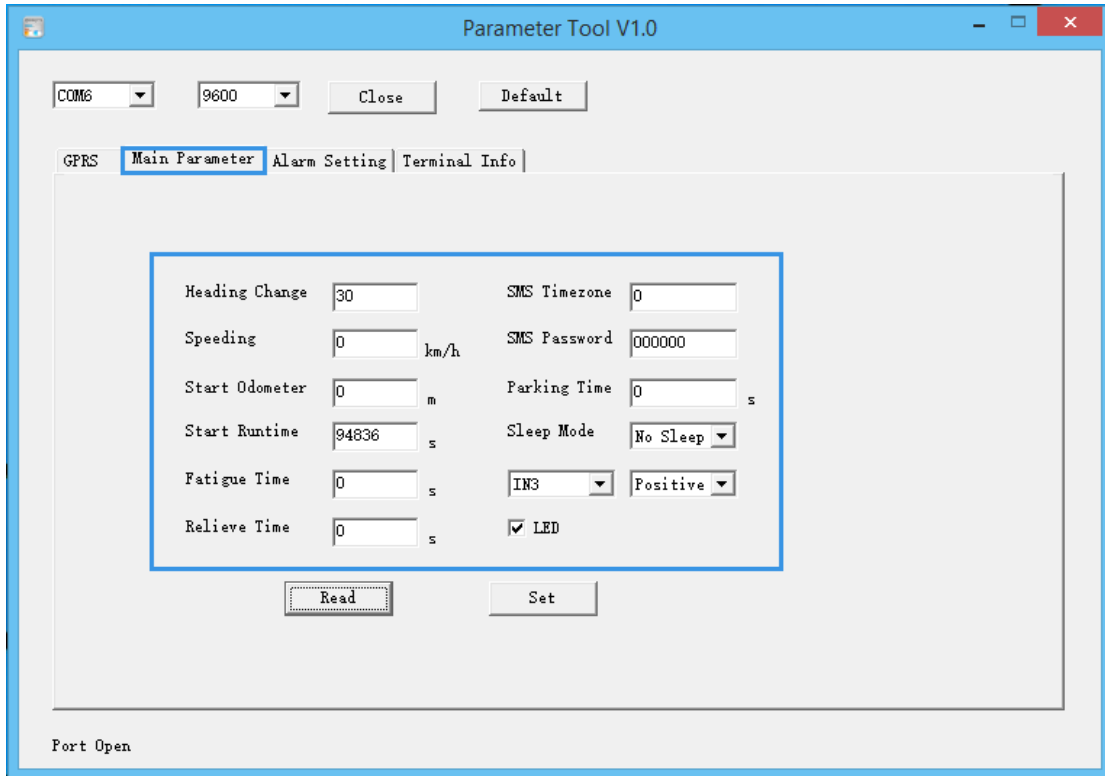
Alarm setting: Set Alarm action, SMS heading string and SOS numbers.

Terminal Info: Read terminal's basic information.

4.2 GPRS menu functions

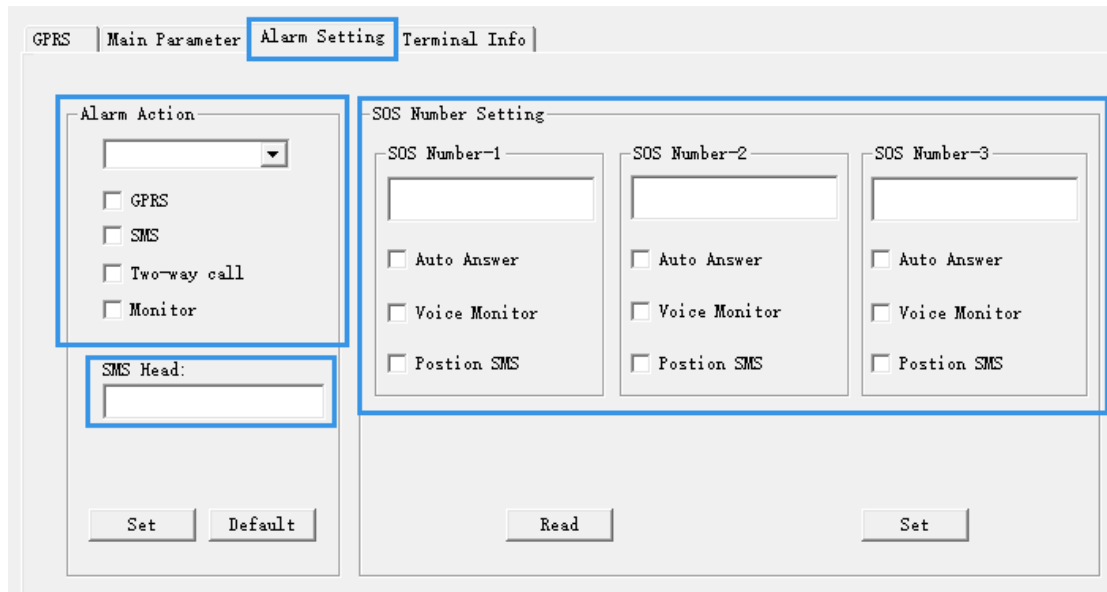
GPRS	
Mode	TCP or UDP
IP	Server IP address or domain
Port	Port of server
APN	Access Point Name, Google or contact local ISP for APN detail
APN Username	If no APN user name, leave it empty
APN Password	If no APN password, leave it empty
Tracker ID	Default is IMEI
Timing Upload Setting	
Timing Interval	Tracking time interval or ACC ON tracking time interval if ACC status detection has been set.
Roaming Interval	Set time interval under roaming network condition. If "Roaming Interval" value is set, both the "ACC OFF interval" and "Parking Interval" settings will be ignored.
ACC OFF Interval	Set time interval under ACC OFF condition, only works when ACC status detection is valid.
Parking Interval	Set time interval when car stop, back-up choice for the users who didn't set ACC OFF interval. This parameter will be ignored if "ACC OFF interval" value is set.
Distance Upload setting	
Distance interval	Tracking by distance, independent from "Timing Upload Settings"
Read and Set menus	
Read	Read current parameters
Set	Save parameters

4.3 Main parameter functions

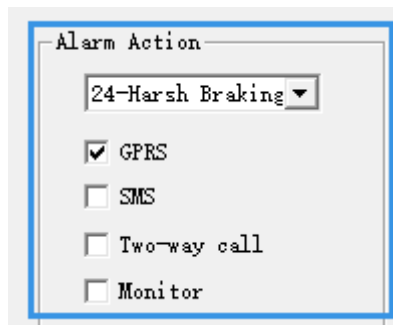


Heading Change	Direction course change value
Speeding	Value of speeding alarm
Start Odometer	Set initial odometer for mileage calculation. Note: Click “Read” button to get current odometer.
Start Runtime	Set initial runtime for running time calculation. Note: Click “Read” button to get current running time.
Fatigue Time	Maximum driving time
Relieve Time	Minimum resting time
SMS Timezone	Range [-12,12], default 0, UTC/GMT Standard.
SMS Password	Default is 000000, 6 digital string, can be reset.
Parking time	Maximum Car stop time, detected via vibration, not related with speed.
Sleep Mode	Normal sleep: turn off all power except GSM module, terminal will be waked up by IO triggering, movement, incoming phone-call or SMS.
	Deep Sleep: turn off all power supply, only wake up by IO triggering or moving.
	Default 5 minutes inactivation waiting before terminal enter into sleep mode, use B15 command to change waiting time.
IN3/IN4	Set input3 or input4 to positive or negative input
LED	Turn on or turn off LED light. Red power light is excluded

4.4 Alarm setting functions

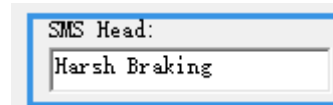


4.4.1 Alarm action



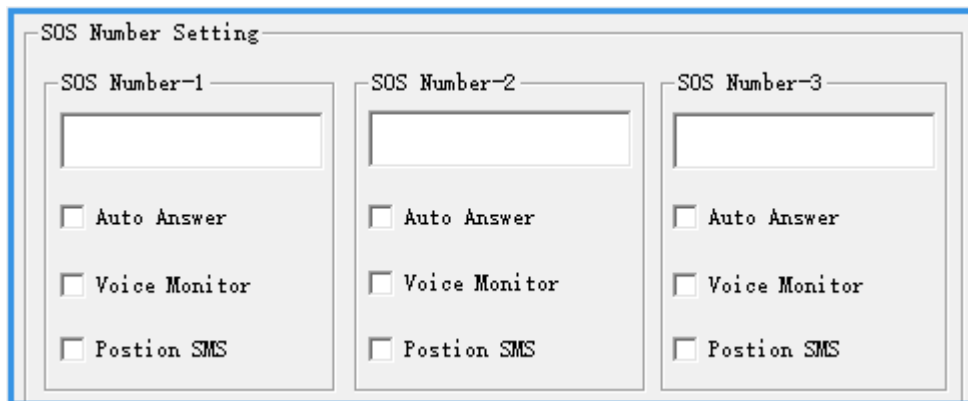
Alarm Action	
Drop-down box	Alarm code and description, refer to <FIFOTRACK COMMAND LIST>
GPRS	Terminal sends out GPRS alarm when alarm triggered
SMS	Terminal sends out SMS alarm when alarm triggered
Two-way call	Terminal calls SOS number for two-way conversation when alarm triggered
Monitor	Terminal calls SOS number under monitor mode when alarm triggered. Note: if both "Two-way call" and "Monitor" checkbox are checked, "Two-way call" will be ignored.

4.4.2 SMS head



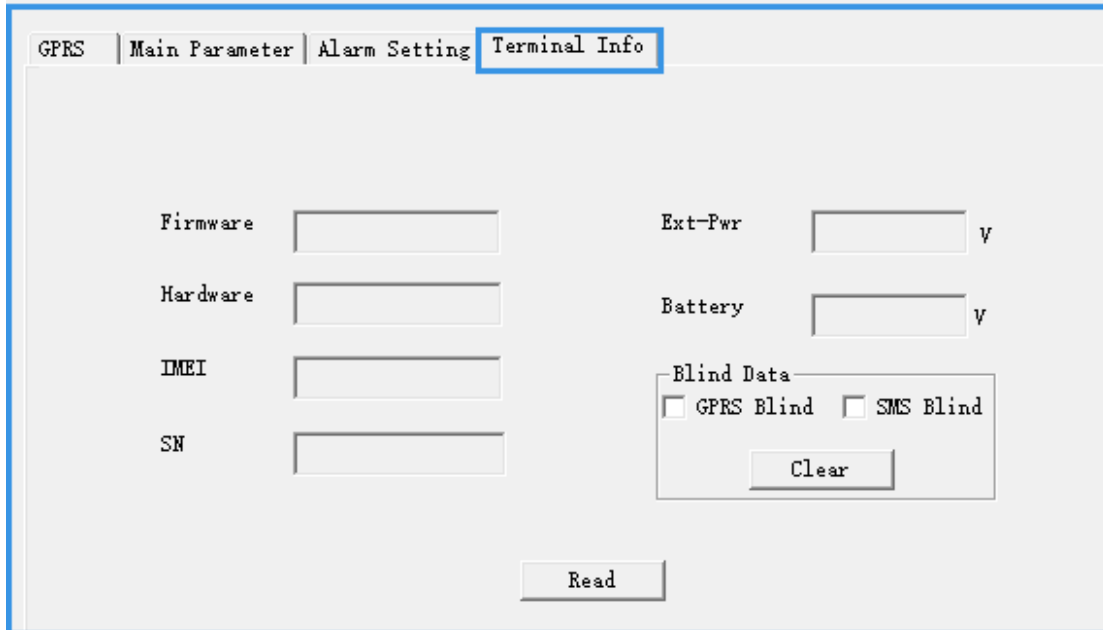
Custom SMS head string, 16 bytes length at most.

4.4.3 SOS number setting



SOS Number Setting	
SOS Number 1-3	Set authorization SOS numbers. Only Authorization numbers are allowed to reach terminal after setting.
Auto Answer	Automatically answer incoming call with two-way calling mode.
Voice monitor	Automatically answer incoming call with voice monitoring mode. Note: if both "Auto Answer" and "Voice Monitor" are checked, "Voice Monitor" is valid, while "Auto Answer" is ignored.
Position SMS	Reply incoming call with position SMS.

4.5 Terminal Info



Terminal Info	
Firmware	Firmware version
Hardware	Hardware version
IMEI	IMEI number
SN	Serial number of terminal
Ext-Pwr	External power voltage
Battery	Internal battery voltage
Blind Data	
GPRS Blind	Clear GPRS blind data
SMS Blind	Clear SMS blind data

Please e-mail us at info@fifotrack.com if any question or feedback.